

Republic Democratic Popular Of Algeria

Ministry Of Transport

E T F I M Mostaganem

Long Term Training

Section : Patron Of The Coast Navigation (P N C)

Module: English

Teacher: Mrs Douar Rym

Maritime English

Lesson N°2



LessonTwo:

1/ Familiarization on Board Ship (Crew of The Ship)

2/Organizational Charts

3/Watching and Listening to Video of types of Merchant ships of lesson 01



1/Familiarization On Board Ship:

1-Captain/Master: the highest responsible officer

A/Deck Department:

1-Chief Officer/Chief Mate: is the head of the deck department on a merchant vessel, responsible for the safety and security of the ship.

2-Second Officer/Second Mate: is in charge of navigation.

3-Third Officer/Third Mate: is charged with the safety of the ship and crew

4-Deck Cadet: is an officer under training a qualified officer

5-Boatswain/Bosun: responsible for all deck works which includes ship maintenance and repair of deck equipments.

6-Able Seaman: member of the deck department

7-Ordinary seaman: concerned with the operation and up keep of deck department areas and equipments.

B/Engineering Department: they are responsible for keeping the ship and the machinery running.

1-Chief Engineer: is responsible for all operation and maintenance that have to do with all machinery and equipments.

2-Second Engineer: engineer responsible for supervising the daily maintenance and operation of the engine department.

3-Third Engineer: in charge of boilers, fuel, auxiliary engines

4-Fourth Engineer: responsible for electrical, sewage treatment and oily water separation systems

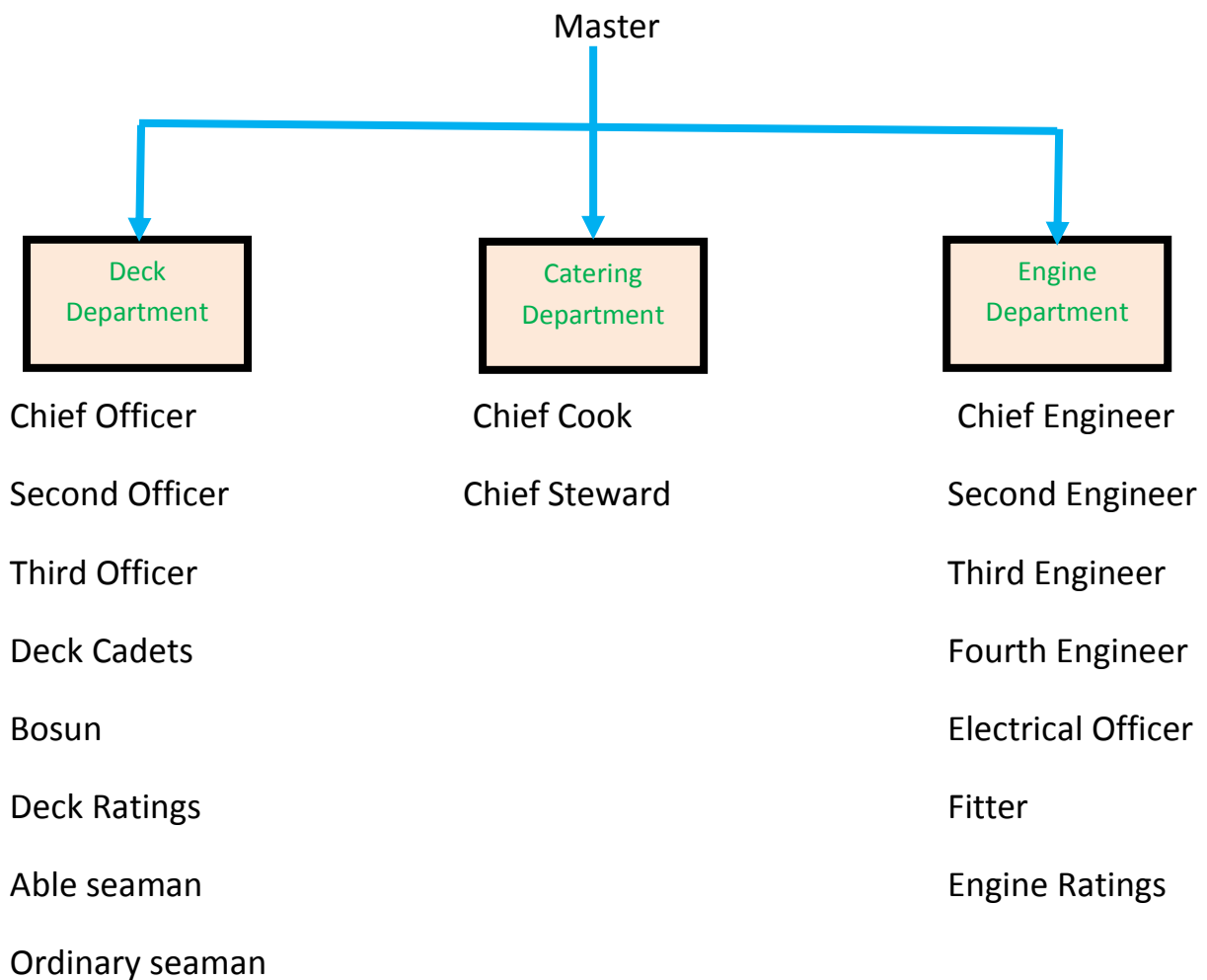
5-Engineering Cadet: is to observe and learn

C/Steward Department:

1-Chief Steward: preparing and serving meals

2-Chief Cook: responsible for the preparation and cooking meals

2/Organizational Charts:



N.B: **Fitter:** **Fitters** construct and assemble mechanical systems. These systems could be factory machines or the piping that carries the chemicals involved in the manufacturing process. **Fitters** thrive on physical, hands-on **work** in a **work** environment that doesn't revolve around a desk. ...

Engine Ratings :running and maintaining all mechanical equipment, including the operation and maintenance of pumps and fuel systems, electrical generating and distribution equipment, refrigeration, air conditioning plant, lifts, and cranes.

Deck Rating: steer the ship, keep watch and assist the Navigation (**Deck**) Officer in a range of navigational, operational and cargo duties. In port, you would secure the ship to the dock, carry out maintenance and contribute to the security of the vessel.

